

### Sabrix 5.0 is the consolidated, non-invasive, determination to report tax automation solution

Sabrix enables Consumer Packaged Goods companies to minimise their direct, operational and compliance cost of VAT.

Whether it is in manufacturing, distribution or retail companies in this sector are increasingly trading on a global platform. This in turn leads to increased local indirect tax compliance obligations.

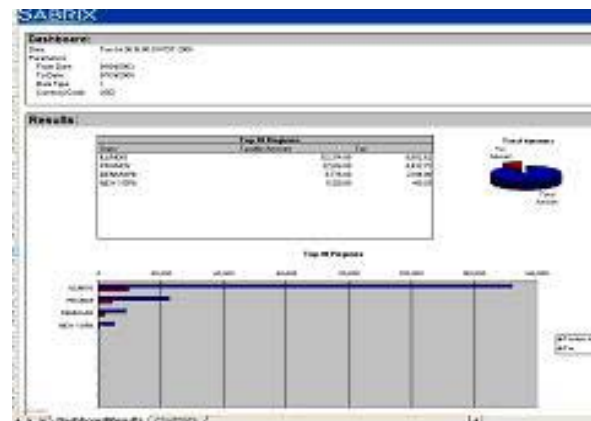
Sabrix 5.0 delivers increased VAT compliance to the CPG sector through the automation of tax determination from an AP/AR end user perspective and the maintenance of rates and rules over 150 countries.

### Reporting

Automated country specific VAT reports ensure that a CPG company's compliance and reporting requirements are addressed with Sabrix 5.0.

Sabrix 5.0 Reporting also ensures Tax users can generate ad-hoc reporting data from the audit database which can be used to extend VAT return data in order to address any tax authority queries and justify VAT declarations submitted.

SABRIX	
United Kingdom VAT Report	
Date:	Fri Aug 04 16:41:11 PDT 2006
Tax direction:	
Company Name:	UK Inc.
Date Source:	Invoice
Report Start Date:	
Report End Date:	
Tax type:	
Summary Data	
Net VAT	
VAT due	
VAT due on Sales (Box 1)	3,955.00
Total VAT due from EC acquisitions (Box 2)	875.00
Total VAT Due (Box 3)	4,830.00
VAT reclaimed on purchases (Box 4)	4,725.00
Net VAT to Pay or (Reclaim) (Box 5)	105.00
Total net value of sales excluding VAT (Box 6)	1,178,600.00
Total net value of purchases excluding VAT (Box 7)	27,000.00
Total net value of supplies to other EC Member States (Box 8)	1,150,000.00
Total net value of supplies from other EC Member States (Box 9)	5,000.00

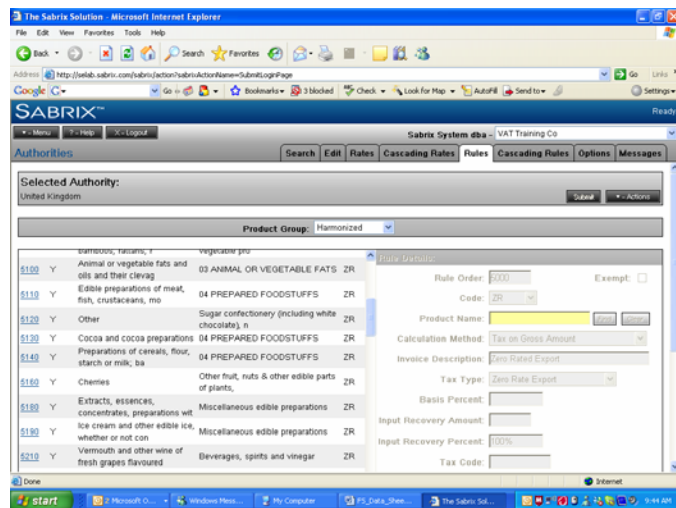


## Product taxability

Sabrix provides content on VAT rates & rules in over 150 countries and 11,500 US taxing jurisdictions.

Internationally Sabrix provides support for all VAT, GST, HST, and PST type taxes in over 150 countries worldwide (including full EU support and support for Brazil and Indian transaction taxes). This support includes rates, product taxability rules, local and cross border transaction tax logic

Sabrix's tax research process has been certified by external auditors as being compliant with the international Statement of Accounting Standards 70i.



## Other 5.0 key enhancements & how they assist the complexity of a CPG company:

**Related charges/ dependant products:** During promotional activities, CPG companies may bundle goods. With this comes increased indirect tax determination complexity. By utilising Sabrix 5.0 functionality on related charges, tax professionals can easily configure Sabrix to identify the related charge and ensure that it follows the tax treatment of the parent product.

**Additional tax types:** Using Sabrix's Custom Authority functionality, CPG companies can manage additional tax types such as excise, environmental levies and disposable bag levies. There is also the possibility to include such taxes in Sabrix's tax research subscription service to ensure that a company trading globally is kept constantly up to date of any changes in these rates and rules.

**Material sets:** CPG companies often group products/materials into sets for tax determination and reporting purposes. This requires significant resources from Operations, Tax & IT in order to configure and maintain within an ERP system. By utilising 5.0 functionality, tax professionals can map lists of products to applicable tax rules without the need to configure individual rules for each product in the list.

## Technology Enquiries

Kid Misso

Systems Engineering

+44 (0) 7714 218 733